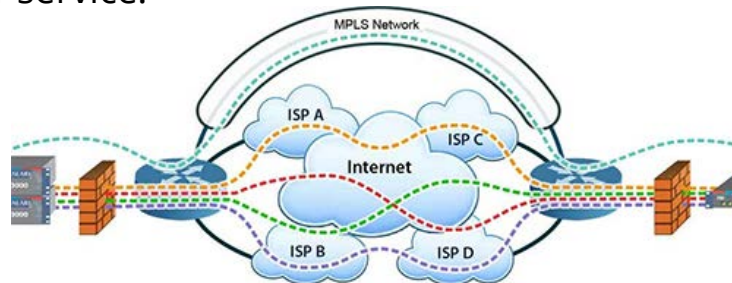


SD-WAN Critical Guidelines

Application Inventory: Ensuring the best performance and security end-to-end means knowing which applications are critical, who uses them and why.

Classify and Prioritize Applications: Once you know your applications, determine exactly how your critical applications need to be accessed, including level-of-security and performance requirements.

Perform Deep Packet Inspection: With more than half of all traffic today being encrypted, any SD-WAN solution you choose must not only be able to inspect SSL-based traffic but do it quickly and efficiently – without affecting overall quality-of-service.



Full Monitoring: With SD-WAN, the best path for data changes constantly depending on a variety of network and business factors. Any solution must be able to support end-to-end visibility across both the network and applications. This helps to ensure that problems are identified and addressed quickly and quality-of-service is preserved.

End User Focus: User experience is a primary motivation for most SD-WAN deployments. Ensure your solution can monitor application delivery across various network types (mobile, wired, etc.) and devices to ensure optimal return on investment.